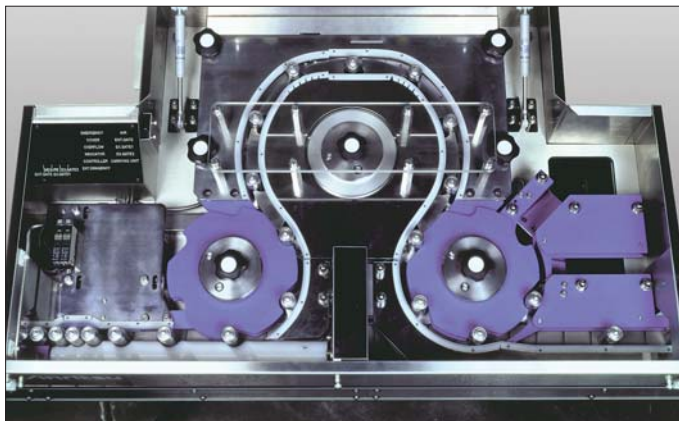


Anritsu

■ Aerosol Can

Checkweigher

KW9627AP00



Assuring Aerosol Can Quality

Features

•Stable Handling for High Accuracy

- The stable, star-wheel conveyor system assures high-accuracy rejection of 150 products/min. In addition, maintenance is easy because the star wheel can be adjusted from the top.
- The compact design with integrated weighcell, rejector, and rejected products chute bin, can be incorporated easily into a production line.

•Validation Support Functions

- The GMP validation functions support daily operation checks, full ON-to-OFF records, automatic recording of phenomenon having occurred at devices, etc. FDA 21CFR Part 11 compliant functions, such as prevention of data falsification, simple passwords, and unlawful computer access are equipped as well.

•Simple Interface and Reliable Operation Checks

- Easy main operations such as start/stop, as well as various displays including detailed settings, histograms, and X-bar with a Windows OS-based touch panel provide simple operations and screens.
- The operation check function monitors rejection so that improper rejection can be recognized.

In addition, the independent check function self-tests operation sensors to support reliable rejection.



Rejection confirmation function
Monitors rejection to prevent passage of NG products into PASS line.



GMP Compatible
External finish is stainless steel and it complies with validation requirements of Pharmaceutical Affairs Law.



CE Marking
Complies with EU quality and safety requirements.



FCC
Complies with the emission standards of the FCC Rules (Class A digital device, pursuant to part 15 of the FCC Rules.)

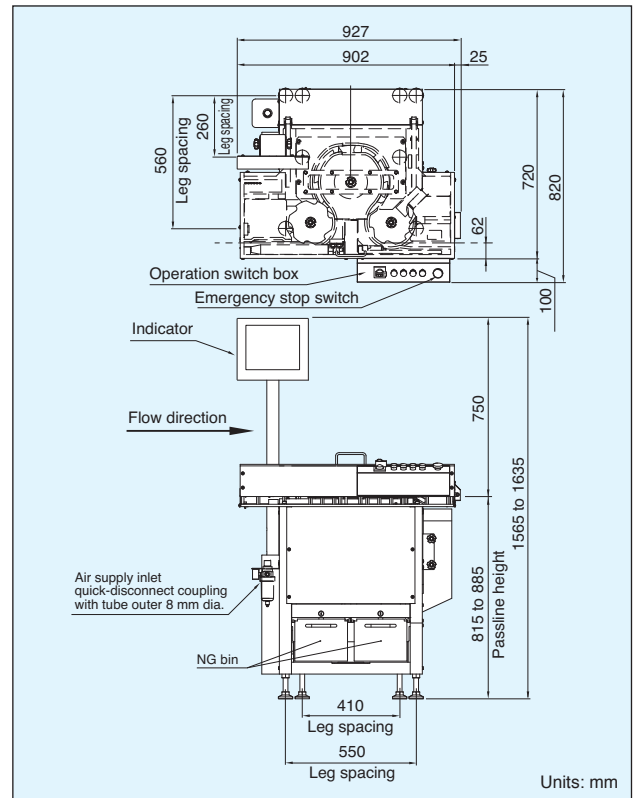


USB support
Comes with a USB 2.0 interface



Ethernet
10Base-T and 100Base-TX LAN connections.

External Dimensions



Specifications

Model	KW9627AP00	
Weight range	0.5 to 60 g	
Maximum accuracy (3 σ) ^{Note 1}	± 0.01 g	
Speed	150 products/min	
Display	10.4-inch color TFT LCD	
Operation method	Touch panel	
Indication range	60.450 g	
Scale interval	0.002 g	
Preset memory	Maximum 100	
Classification	3	
Product size	Can size	21 to 25 mm dia. ^{Note 3}
	Height	40 to 80 mm
Power requirements ^{Note 2}	100 to 115 Vac +10% -15%, single phase, 50/60 Hz, 400 VA	
Air requirements	0.4 MPa, 20 ℓ /min [A.N.R.] (Use dry air.)	
Mass	150 kg	
Environmental conditions	0° to 40°C (variation not to exceed 5°C/h to maintain accuracy), relative humidity 30% to 85%, no condensation	
Protection class	IP30 compliance	
External finish	Stainless steel (SUS304) excluding some parts	

Note1: The speed and accuracy may change depending on the checked product type and rejector type.

Note2: It supports 200 to 240 Vac. (option)

Note3: Part replacement is required.

Anritsu

ANRITSU INDUSTRIAL SOLUTIONS CO., LTD.

INTERNATIONAL SALES DEPARTMENT

5-1-1 Onna, Atsugi-shi, Kanagawa-Prf., 243-0032, JAPAN

PHONE +81 46 296 6699

FAX +81 46 225 8387

<http://www.anritsu-industry.com/E>

CAT. NO. K3127-A-1

ISO14001 CERTIFICATE No.JQA-EM0210

ISO 9001 CERTIFICATE No.JQA-0566

©ANRITSU INDUSTRIAL SOLUTIONS CO., LTD. 2008

•In addition to daily inspection, an annual maintenance check should be carried out.

Specifications are subject to change without notice. No part of the whole of this catalog may be reproduced without our permission.

Printed on Recycled Paper Printed with environment-friendly vegetable soybean oil ink.

2008-4 5 (D1) Printed in Japan